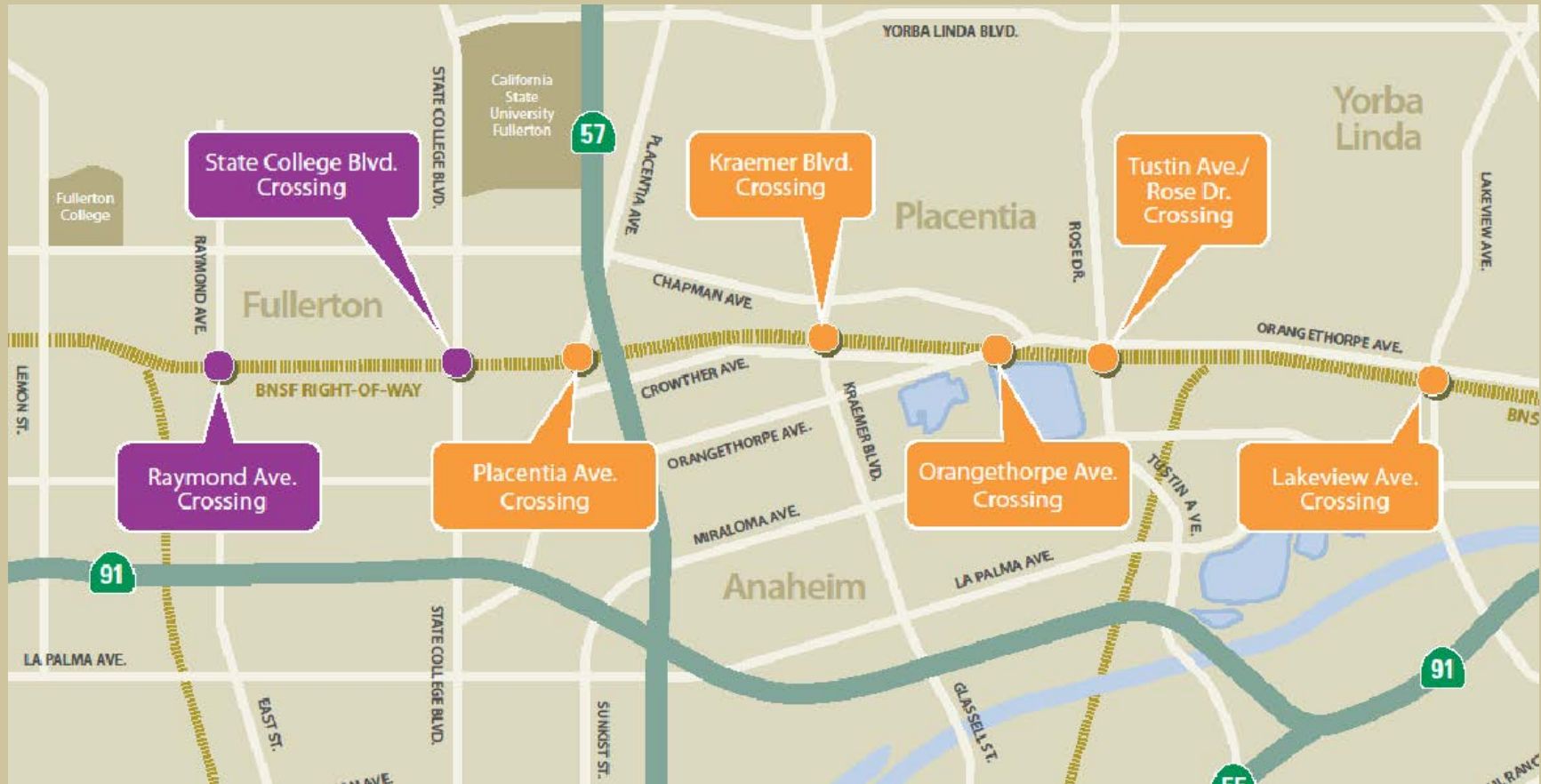




## OC Bridges Railroad Grade Separation Program Update



# Program Overview



Project benefits: improve mobility and safety resulting in a better quality of life



# How are projects funded?

## Program Budget: \$634.66 Million



### Measure M2

- ½ cent sales tax for transportation
- Passed by 70% of Orange County voters in 2006

### State of California

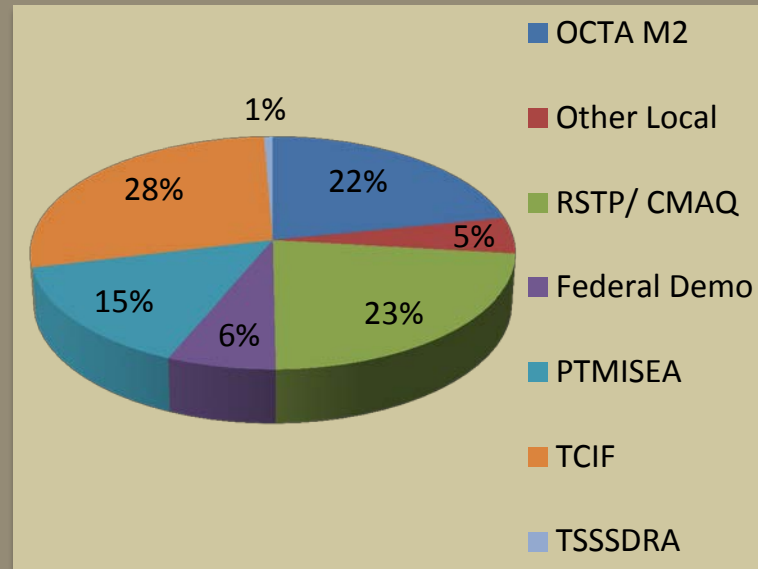


- Proposition 1B/TCIF
- Passed by 61% of California voters in 2006
- PTMISEA



### Federal Transportation Funding

- Congressional appropriations
- Federal Transportation Act
- CMAQ



M2 – Measure M2

RSTP/CMAQ – Regional Surface Transportation Program/Congestion Mitigation and Air Quality

DEMO – Federal Demonstration Earmarks

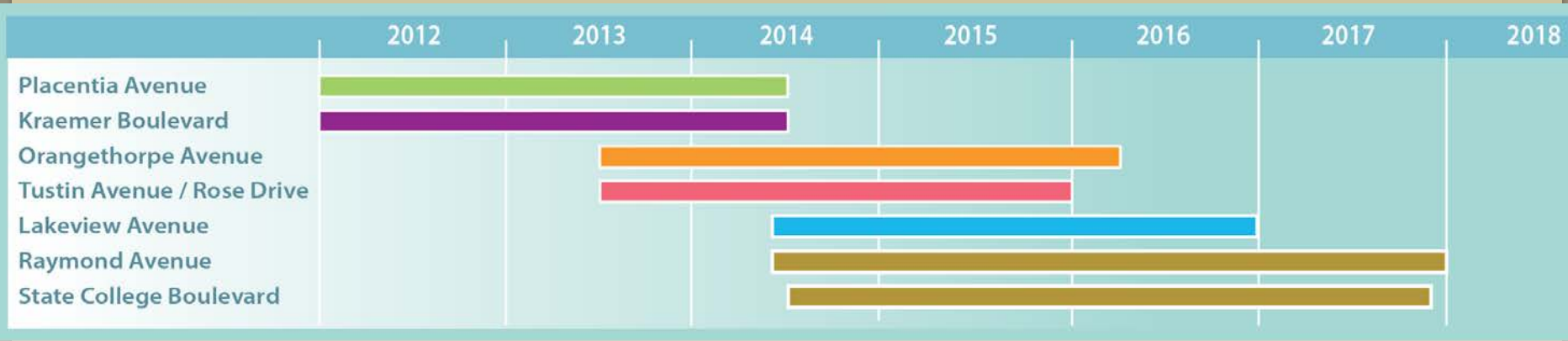
PTMISEA – Public Transportation Modernization, Improvement, and Service Enhancement Account

TCIF – Trade Corridor Improvement Fund

TSSSDRA – Transit System Safety, Security, and Disaster Response Account



# Current Construction Schedule



**All seven projects are in the construction phase**

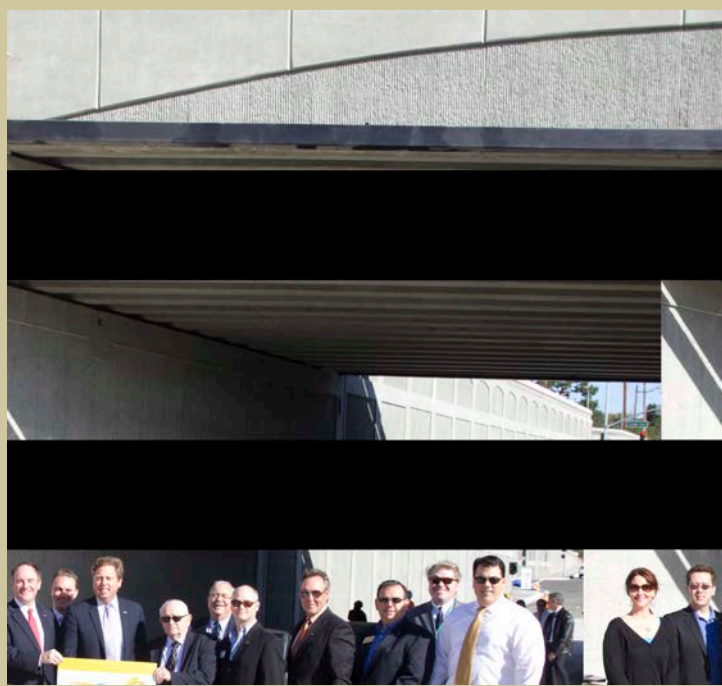


# Project Status

## Placentia Avenue Grade Separation



<b><u>Contractor</u></b>	<b><u>Value</u></b>	<b><u>Key Dates:</u></b>
<b>Flatiron West</b>	<b>\$25,897,978</b>	<b>1/3/12 – Start Construction</b>
	<b>918 days</b>	<b>7/21/14 – End Construction</b>



**PLACENTIA AVENUE**  
First of Seven!



Opened to public traffic on March 12, 2014





# Project Status

## Kraemer Boulevard Grade Separation



Contractor  
Atkinson

Value  
\$34,049,430  
917 days

Key Dates:  
1/16/12 – Start Construction  
7/28/14 – End Construction



**KRAEMER BOULEVARD**

Second of Seven!



Open to public traffic in early June 28, 2014



# Orangethorpe Avenue Overpass Rendering



Contractor  
**Flatiron West**

Value  
**\$49,648,993**  
**1,000 days**

Key Dates:  
**7/1/13 – Start Construction**  
**3/27/16 – End Construction**





# Tustin Avenue/Rose Drive Overpass Rendering



Contractor  
USS Cal Builders

Value  
\$30,871,703  
890 days

Key Dates:  
7/8/13 – Start Construction  
12/15/15 – End Construction





# Lakeview Avenue Overpass Rendering



Contractor  
OHL, USA

Value  
\$30,562,248  
900 days

Key Dates:  
7/1/14 – Start Construction  
12/17/16 – End Construction

O.C. BRIDGES  
Improving safety. Removing delays.

**LAKEVIEW AVENUE**  
Fifth of Seven!

MEASURE M

OCTA



# State College Boulevard Underpass Rendering



Contractor  
USS Cal Builders

Value  
\$41,974,278  
1,220 days

Key Dates:  
6/4/14 – Start Construction  
10/6/17 – End Construction



O.C. BRIDGES  
Improving safety. Removing delays.

**STATE COLLEGE BLVD.**  
Sixth of Seven!

MEASURE M

OCTA






# Raymond Avenue Underpass Rendering





Contractor  
**Flatiron West**

Value  
**\$51,058,559**  
**1,310 days**

Key Dates:  
**6/2/14 – Start Construction**  
**1/2/18 – End Construction**



**RAYMOND AVENUE**  
Seventh of Seven!





# Outreach Meetings

City Council / School Boards

Open Houses

Property Owners

Homeowner Associations

Community Events

Business Parks

Individual 1: 1



# Program Awareness



## OC BRIDGES Construction Notification

**March 21, 2014**

The Orange County Transportation Authority is building a series of bridges to separate trains from vehicles along the BNSF corridor in Fullerton, Placentia and Anaheim. In accordance with federal railroad safety regulations, residents should expect to hear an increase in the frequency of train horns because of construction activities on and around the railroad tracks, regardless of quiet zone designation.

Regular work hours are Monday through Saturday, 7 a.m. to 8 p.m.

The following construction activities have either recently completed or are anticipated to begin shortly:

- Placentia Avenue Undercrossing**
- Placentia Avenue is now open to traffic. Drivers should follow the reduced speeds through the project area as the contractor completes work on and around the roadway.
  - Begin installation of street lighting along Placentia Avenue and Fender Avenue
  - Continue installation of minor concrete improvements (curb and gutters, sidewalks, stamped concrete, etc.) along Fender Avenue and Placentia Avenue
  - Continue placement of concrete barrier railing for retaining walls
  - Continue items necessary to complete the pump station
  - Continue restoration of private property (ies) from Temporary Construction Easements
  - Begin installation of irrigation / landscaping (project wide)

Photo: Looking north at new Placentia Avenue bridge



- Kraemer Boulevard Undercrossing**
- Continue preparing walls for architectural treatment
  - Continue building pump station electrical building
  - Continue ramps and sidewalks at Hawaii Way intersection
  - Continue installation of water line at West Crowther Avenue and Kraemer Boulevard

Photo: Looking east at Crowther Avenue and Kraemer Boulevard intersection



- Orangethorpe Avenue Overcrossing**
- AT&T continuing to pull cable and fiber
  - Preparing sewer line and manhole connections in Miller Street and Crowther Avenue
  - Moving stockpile for B' gas line contractor
  - Continue installing 12" waterline for City of Anaheim

- Tustin Avenue / Rose Drive Overcrossing**
- Excavate, form, place rebar and concrete for new retaining wall along the north side of Orangethorpe east of Rose Drive
  - Complete asphalt concrete removal on northbound Rose Drive
  - Complete placement of spring concrete slabs within the limits necessary to install bypass road
  - Continue the installation of 10" sewer line from Orangethorpe Avenue to Rose Drive
  - BNSF Railroad to continue installation of remaining crossing arms and panels for temporary bypass road
  - AT&T continuing to pull cable and splice fiber optic cables in the replaced vaults in Orangethorpe Avenue and Rose Drive

## RAYMOND AVENUE & STATE COLLEGE BOULEVARD UNDERCROSSINGS - SPRING 2014 UPDATE

CITY OF FULLERTON

**AT A GLANCE**

PROJECT COST (RAYMOND): \$112 million  
 PROJECT COST (STATE COLLEGE): \$66 million  
 CONSTRUCTION START: Spring 2014

**CORRIDOR CITIES:** Anaheim, Fullerton and Placentia

**WEBSITE:** www.ocbridges.com  
**HELPLINE:** 1-777-OCTA-99  
**FACEBOOK:** facebook.com/ocbridges  
**TWITTER:** twitter.com/ocbridges

The City of Fullerton and the Orange County Transportation Authority (OCTA) are moving forward with the construction of the Raymond Avenue and State College Boulevard undercrossings, which will separate vehicle traffic from train traffic at two main intersections in the City of Fullerton by lowering the roadway under the railroad crossings. One railroad bridge will be built at Raymond Avenue and the Burlington Northern Santa Fe Railway between Santa Fe Avenue to the north and Ash Avenue to the south. State College Boulevard and the Burlington Northern Santa Fe Railway between Santa Fe Avenue south (see maps on reverse). When completed, the project will move cars safely and smoothly and boosting mobility.

To prepare for the bridge construction starting later this spring, multiple utility relocations are in this work including traffic lanes; drivers and pedestrians are asked to use caution when traveling safely for its project workers and the public. During construction, please:

- Slow down and watch for workers and equipment
- Allow extra time to get to work, school and appointments
- Be extra careful when driving at night and in rainy weather
- Avoid use of mobile phones or other distractions
- Watch for closures and follow detours
- Be patient. Remember that this is a short-term inconvenience for a long-term traffic solution

If you're interested in keeping up with the progress of these projects, please visit the project web up-to-date construction notifications!

The OC Bridges Program is partially funded by Measure M - Orange County's half-cent sales tax for transportation improvements.

For more information, visit [ocbridges.com](http://ocbridges.com) or contact Tresa Oliveri, OC Bridges Outreach Manager at [toliveri@ocbridges.com](mailto:toliveri@ocbridges.com)



**OC BRIDGES** Improving safety. Removing delays.

**Placentia Avenue Undercrossing**

**DESIGNATED DETOUR**

**KEY**

- Bypass Road
- Road Closures
- Bypass Road
- Portable Changeable Message Sign

For more information, visit [ocbridges.net](http://ocbridges.net) or contact Tresa Oliveri of the OCTA External Affairs Division by email at [ocbridges@octa.net](mailto:ocbridges@octa.net) or by phone at (714) 560-5374.

Schedule is estimated and subject to change. Project area is approximate.



2012/08/03





# Website Features



Orange County Transportation Authority

Project Overview

**O.C. BRIDGES**  
Improving safety. Removing delays.

Project Contact  
Trena Citteri  
Outreach Manager  
(714) 963-5274  
tcitteri@octa.net

Orange County's economy and quality of life are second to none. But keeping our economy growing and protecting our quality of life requires improvements to our transportation system, including increasing mobility and safety.

The OC Bridges Program is partially funded by Measure M. Orange County's Measure M website: [MeasureM.org](#)

Orange County Transportation Authority  
Ray Gabrielson  
714-560-5981

Pages: 5 Client ID: 1880

EarthCam Account Information

Archive Player

Live Image Player

Connection Data

799 kb/s

256

64

16k

4

1M

3G

Post Note

Notes

All Cameras

OCTA Executive

Multiview

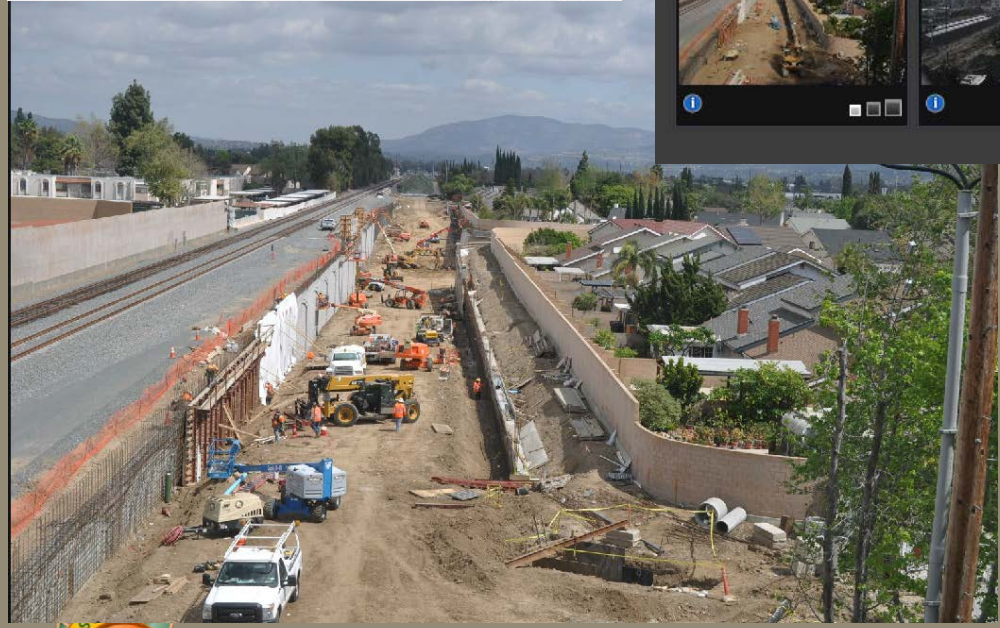
Kraemer Blvd...

Orangethorpe...

Placentia Ave...

Sand Canyon Ave...

Tustin/Rose Grade...



Signal Synchronization

MOTORIST SERVICES

CALENDAR

NEWS

GET CONNECTED

Project Benefits

- Greater Driver/Pedestrian Safety
- Shorter Emergency Response Times
- Elimination of Delays
- Easier Business Access
- Enhanced Economic Vitality
- Improved Air/Noise Conditions
- Better Quality of Life

OC Bridges: Raymond Undercrossing

1:29 / 1:44

Helpline (toll free) 877-OCTA-999

Twitter

